



Table Coral. *Acropora ?specifera..* L-VL, Rt.



Acroporidae. *Montipora ?florida.* M-L, Cs and Mx.



Florescence Grass Coral. *Galaxea fascicularis.* M, Rt, in hollows.



Anchor Coral. *Fimbriaphyllia ancora.* M, Cs, near jetty.



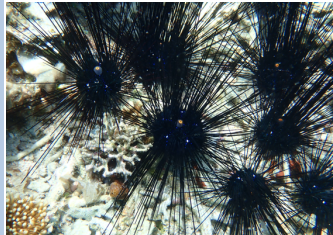
Curryfish Sea Cucumber. *Stichopus hemmanni.* M, Sg and Mx.



Bennett's Feather Star. *Oxycomanthus bennetti.* S-M, Rt.



Feather Star. *Stephanometra* sp. M, Rt, Mx, generally nocturnal.



Black Longspine Sea Urchin. *Diadema setosum.* M, Cs and Mx.



Chocolate Chip Sea Star. *Protoreaster nodosus.* M, Cs and Sg.



Grand Coral Worm Snail. *Serpularia grandis.* S, Rt and Cs.



Boring Giant Clam. *Tridacna crocea.* S-L, Cs and C.



Swollen Phyllida. *Phyllida varicosa.* VS, Rt, Re and Cs.



Tree Fern Coral or Star Polyps. *Clavularia* sp. L colonies, Rt.



Tube Anemone. *Cerianthus filiformis.* VS, Cs and Sg.



Christmas Tree Worm. *Spirobranchus corniculatus.* VS, Rt.

KOMODO RESORT

Snorkellers Guide to Marine Life at Komodo Resort and Dive Club.

prepared by
Dr. Nigel Thomas

MARINE LIFE

This guide is intended to let you know about a few of the many hundreds of marine species you can see in the waters off the Komodo Resort and Dive Club. The species have been grouped into different types, with an indication of where you can best see them.



All of these images were collected while snorkelling at the resort in 2022. All **common names** are in bold while *Latin* are in italic. An indication of size is given: L = Large, M = Medium, S = Small and V = Very. ☒ = Don't touch!, ☹ = keep your distance. Each species is related to a habitat ; on the reef top (Rt), seaward edge of the reef (Re), coral outcrops with sand (Cs), concretions (C), mixed seabed (Mx), in open water (Ow), Seagrass (Sg) or Mangrove (Mg). ? in the name means uncertain identification.

Copyright to photographs held by Nigel Thomas (2017). This is a **Resort Snorkeller Guide**. For more details use QR above or visit <https://resortsnorkeller.com/regions/indo-pacific/komodo-resort-and-diving-club/>. Contact Nigel on nstthomas1856@gmail.com.



SAFETY

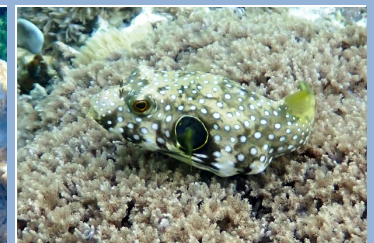
Pay particular attention to safe entry and exit points at all times. The best entry point, on all states of tide, is the jetty, marked 4, but be alert to vessel activity. The three shore locations 1-3 should only be used above half tide, to avoid damaging shallow water corals.



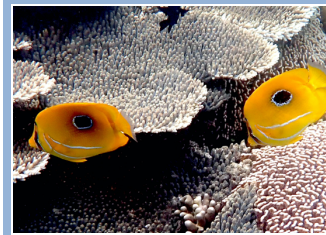
Golden Spadefish. *Platax boersii.* M, Re and Cs. Shoals near jetty.



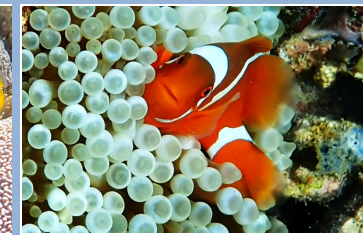
Emperor Angelfish. *Pomacanthus imperator.* M, Rt and Re.



White-spotted Puffer. *Arthron hispidus.* S-M, Rt, Re and Mx.



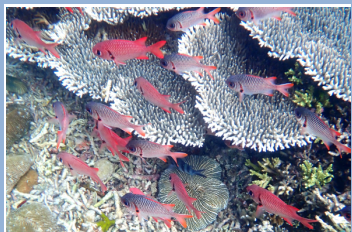
Eclipse Butterflyfish. *Chaetodon bennetti.* S-M, Rt and Re.



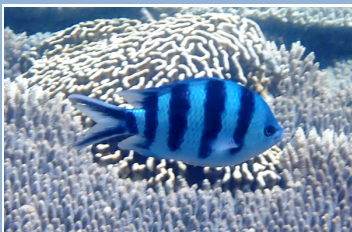
Spinecheek Anemonefish. *Premnas biaculatus.* S, Rt and Re.



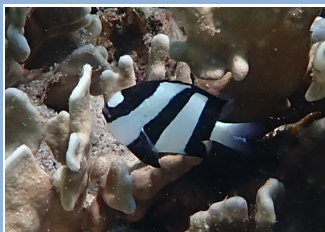
Saddled Butterflyfish. *Chaetodon ephippium.* S-M, Rt and Re.



Violet Soldierfish. *Myripristis violacea.* S-M, Rt.



Scissortail Sergeant. *Abudefduf sexfasciatus.* S, Rt, Re and Ow.



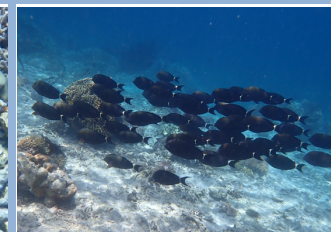
Humbug dascyllus. *Dascyllus australianus.* S, Rt and Cs.



Striped Surgeonfish. *Acanthurus lineatus.* M, Rt and Re.



Elegant Unicornfish. *Naso elegans.* M, Rt and Re.



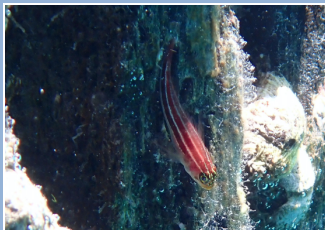
Fine-lined Surgeonfish. *Acanthurus ?auranticavus.* M, Re, Cs. Near jetty.



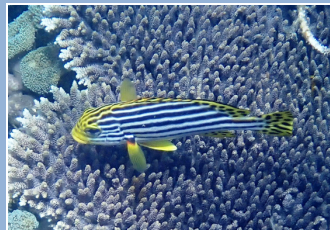
Dash-Dot Goatfish. *Parupeneus barberinus.* M, Rt and Cs.



Sharpnose Sandperch. *Parapercis cylindrica.* S-M, Cs.



Striped Triplefin. *Helcogramma striata.* VS. On woodwork of jetty.



Oriental Sweetlips. *Plectorhinchus vittatus.* M, Rt and Re.



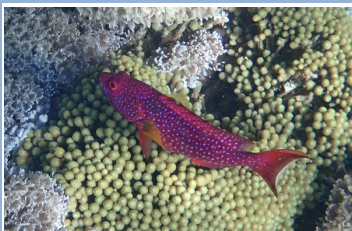
Blackpatch Triggerfish. *Rhinocanthus verrucosus.* M, Cs and Mx. ☹️



Orange-lined Triggerfish. *Balistapus undulatus.* M, Rt and Cs



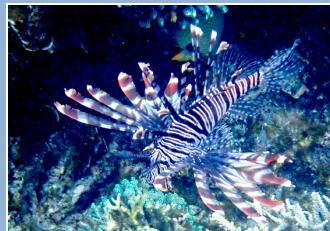
Peacock Grouper. *Cephalopholis argus.* M-L, Rt and Re.



White-edged Lyretail. *Variola albigmarginata.* ML, Rt and Re.



Honeycomb Grouper. *Epinephalus merra.* M, Cs.



Red Lionfish. *Pterois volitans.* M, Re. ☹️



Anchor Tuskfish. *Choerodon anchorago.* M, Rt, Re, Cs and Mx.



Redbreasted Wrasse. *Cheilinus fasciatus.* M, Rt, Re and Mx.



Foxface Rabbitfish. *Siganus vulpinus.* M, Rt, Re and Cs.



Virgate Rabbitfish. *Siganus ?virgatus.* M, Cs.



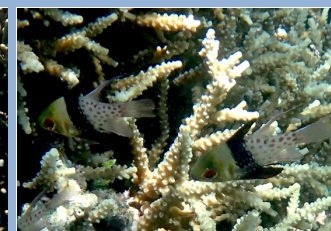
Clouded Lizardfish. *Saurida nebulosi.* S-M, Rt, Re and Cs.



Striped Catfish. *Plotosus lineatus.* VS, Cs and Mx. ☹️



Hinged Shrimpfish. *Aeoliscus strigatus.* S, Cs and Mx. Near jetty.



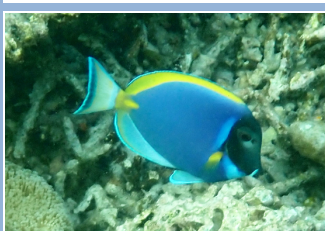
Pyjama Cardinalfish. *Sphaeramia nematoptera.* VS, Rt and Mg.



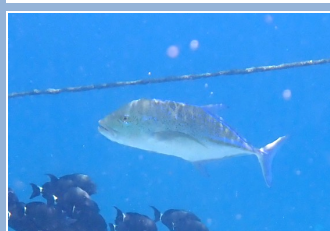
Three-lined Monocle Bream. *Scoloplos trilineata.* S-M, Cs.



Checked Snapper. *Lutjanus decussatus.* M, Cs.



Powderblue Surgeonfish. *Acanthurus leucosternon.* M, Rt, Re



Bluefin Trevally. *Caranx melampygus.* L, Re, Ow, near jetty.



Crocodile Needlefish. *Tylosurus crocodilus.* M-L, Ow, near surface.



Bluefin Trevally. Carangidae. *Caranx melampygus.* M, Ow, near jetty.

